

TOYOTA GENUINE DASH CAMERA

QUICK START GUIDE



8GB
Industrial Grade
Memory Card

Your Toyota Genuine Dash Camera automatically begins recording when the vehicle's ignition power is turned on, no further action is required. When the green light is solid, the system is activated. A short, high-tone beep indicates that startup is complete.



MICRO SD MEMORY CARD

Note that the included micro SD card must be inserted into the camera for it to function.



INFINITE LOOP RECORDING

Once activated, video and audio are continuously recorded until the ignition is turned off and the footage is saved on the micro SD card. When the micro SD card is full, the oldest video files are then overwritten.



INCIDENT RECORDING

In the event of an abnormal shock when driving, Incident Recording mode is activated automatically, protecting the video footage for the 12 seconds before impact and the 8 seconds immediately after on the camera's micro SD card. No driver action is required.



PARKING SURVEILLANCE

If the vehicle is struck while parked, even if it is powered off, Parking Surveillance mode will automatically record for up to 60 seconds following the impact and the file will be protected on the micro SD card. No driver action is required.



AUDIO SWITCH

Audio recording can be disabled or enabled using the Audio On/Off switch.



INTERESTING EVENT RECORDING

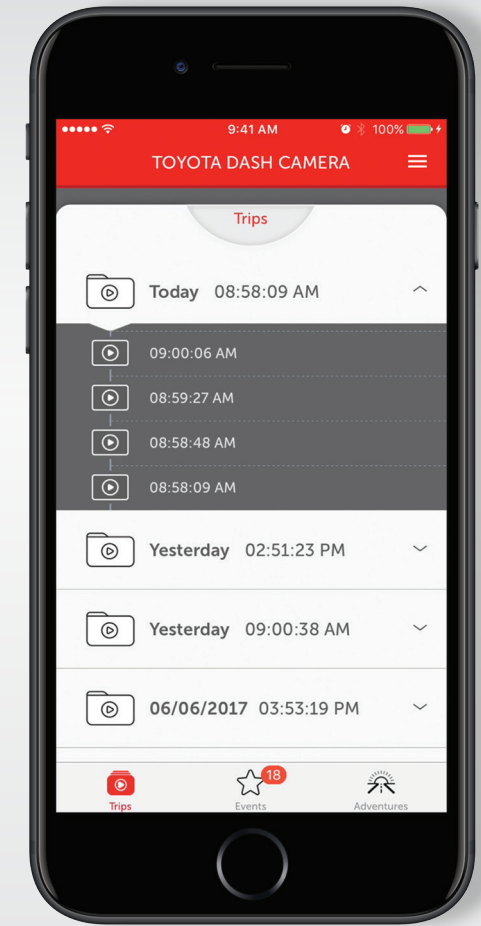
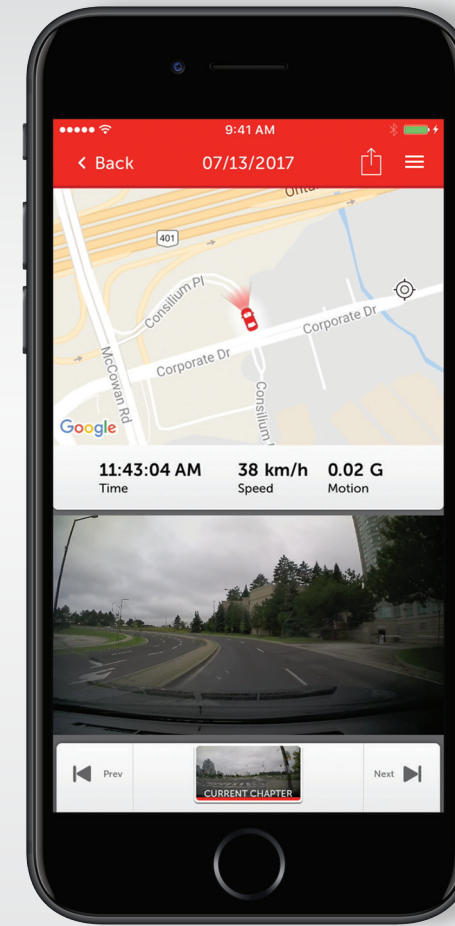
To capture interesting events during your travels, quickly push the Action button on the camera. The camera will automatically protect the past 12 seconds and the following 8 seconds to the micro SD card.



ADVENTURE MODE

To capture and protect long stretches of video/audio while driving, push and hold the Action button on the camera until the camera emits three short, high-tone beeps (typically 1 second). Up to 87 approximate minutes of footage will be automatically protected.

To turn Adventure mode off, push and hold the Action button again until three short, high-tone beeps are emitted.



COMPUTER SOFTWARE

Video and audio recordings from the dash camera's micro SD card can be played back and saved on a computer. Various settings for the dash camera can be changed on the computer using the viewer software.

THE SOFTWARE CAN BE DOWNLOADED HERE:

<https://www.toyota.ca/toyota/en/parts-service/accessories>

Follow the instructions on the screen to perform the installation. When it is complete, a shortcut icon for **DASH CAM VIEWER** will be created on the Desktop. Insert the micro SD card from the dash camera into the card reader device provided and connect the device to the computer.

To change settings for the dash camera select Settings-Camera Settings from the Menu on the main screen. When the micro SD card is reinserted into the dash camera and the ignition key is turned on, the new settings will take effect.



TOYOTA GENUINE DASH CAMERA MOBILE APP

The Toyota Genuine Dash Camera can be paired wirelessly to any smartphone via a Wi-Fi connection. The video and audio recorded by the dash camera can then be played back on your smartphone. Various dash camera settings can be changed using the mobile app.

To make use of this feature, download the application, called **TOYOTA DASH CAMERA**, from Google Play Store or Apple App Store.

It is important to note that the viewer app

can only be used if the phone is connected to the dash camera's Wi-Fi network.

For Android phones, connection must be made using the Wi-Fi DIRECT connection method, (not normal Wi-Fi network connection). Consult your smartphone's instruction manual for the appropriate Wi-Fi/Wi-Fi DIRECT connection procedure.

For a detailed overview of the Toyota Genuine Dash Camera, please refer to the Owner's Manual.

